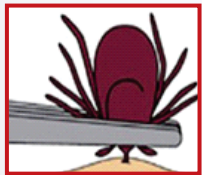


SEND A TICK TO COLLEGE

AND HAVE IT TESTED FOR PATHOGENS.

HOW TO REMOVE A TICK

Grab the tick with fine tweezers (forceps) and pull with a steady upward motion. After removal, clean with antiseptic (alcohol or iodine).



Watch the bite site for signs of the expanding "bull's eye rash". Not all ticks carry diseases. Know which species bit you, have the tick tested if you are concerned, and see a physician when signs of illness arise.



HOW TO SUBMIT A TICK FOR TESTING

Having your tick tested couldn't be easier. Just follow 5 simple steps:



Place the tick - dead or alive - in a sealable plastic bag.



Order your TickReport™ online at www.TickReport.com.



Write the order number on the bag containing your tick.



Send - by US post or other courier services - the labelled bag in the envelope to:

TickReport™ - Laboratory of Medical Zoology
101 Fernald Hall
University of Massachusetts
270 Stockbridge Road
Amherst, MA 01003
USA



Receive electronic results ≤ 3 business days after we receive the tick.

CONTACT US



413 545 1057



support@TickReport.com



www.TickReport.com

A service brought to you by


LABORATORY of
MEDICAL ZOOLOGY
UMass Amherst

TICK BITE?



TEST
RESULTS
BUSINESS
IN 3
DAYS

SEND A TICK TO COLLEGE

AND HAVE IT TESTED FOR PATHOGENS.



TickReport

Because a piece of data is peace of mind

www.TickReport.com

www.TickReport.com

TickReport™ provides a professional tick testing service to public individuals and agencies seeking more information about the risk of dangerous pathogens.

WHO SHOULD WORRY ABOUT TICKS?

Anyone who spends time outdoors—whether it's gardening, hiking, or just walking to the beach—runs the risk of being bitten by ticks.

Protect yourself and your family from tick bites using repellents and doing thorough tick checks after outdoor activities. If a tick bites you, remove it promptly. There is a greater risk of disease transmission when ticks are allowed to feed for longer periods. If you are bitten, consider having the tick tested for pathogens at TickReport™.



TEST RESULTS
IN 3 BUSINESS
DAYS

Multiple bacterial, parasitic and viral pathogen tests.



Live Chat:
support@TickReport.com

OUR SERVICES

- ✓ **Identification of tick species and life stage.** Not all tick species are associated with disease. Different tick life stages pose different threats. For this reason, the CDC recommends having your tick identified to assess disease risk.
- ✓ **Photo-documentation of the tick.** We take two, high-resolution images (top and bottom) of every tick.
- ✓ **Assessment of the tick's feeding status.** We categorize ticks based on how long they've fed because many of the pathogens require several days of feeding to move from the tick to the host (human or other animals). Unfed (flat) ticks pose little risk, while fully engorged ticks have fed for a long time and are associated with greater risk.
- ✓ **Tests for presence of tick-borne pathogens.** Every tick-borne disease begins with infection of one of several pathogens (bacterial, parasitic or viral). We've developed highly accurate and sensitive tests to detect these pathogens in ticks. Infected ticks MAY transmit a variety of pathogens. Lyme disease is the most prevalent tick-borne disease in the U.S.

Visit www.TickReport.com for a complete list of pathogens we test.
- ✓ **Reports that are accurate and secure.** Access to your customized TickReport™ are posted on a secure URL link to our website.
- ✓ **Archival storage of tick samples.** Each tick extract is kept frozen so that clients may request additional testing at any time. This archive serves as a record of personal exposure and can be used to retrospectively look for pathogens that weren't tested.
- ✓ **Rapid turnaround and low price.** All services are completed in three business days (or less) from the time we receive the tick. As a non-profit organization, we are always searching for ways to increase value by reducing our already low prices and adding more services.

WHY SHOULD I HAVE MY TICK TESTED?

Not all ticks carry disease. Knowing which species bit you and if it was carrying any diseases can help a physician treat you if signs of illness arise. TickReport™ is not a substitute for medical diagnosis, but it can help you and your physician assess your risk of exposure to Lyme and other diseases.

We're a not-for-profit, research laboratory and so we make test results available to the public. Private information (name, address, etc.) is always kept confidential, but the information about where the tick was found and what pathogens it carried has great value to individuals and agencies tracking tick-borne diseases.

TickReport™ public data provide a unique surveillance record for the distribution and spread of tick-borne diseases. Visit our online Passive Surveillance Database (www.TickReport.com/stats) to see the prevalence of Lyme and other pathogens in your zip code or state .

MORE INFORMATION

- ✓ TickEncounter - University of Rhode Island: www.TickEncounter.org
- ✓ Massachusetts Department of Public Health: www.mass.gov/dph/tick
- ✓ Center for Disease Control and Prevention: www.cdc.gov/ticks/diseases
- ✓ For tick removal tools visit: www.TickEase.com

